



Insulated Terminals Molded Diallyl



Double Turret

Refer to Figure 1410

Swage Type

Part No.	"B" Diameter ⁺⁰⁰⁰ / ₊₀₀₅	W	X	Y	Z	Terminal	DWV	U DIA
1410A	.188	.312	.054	.359	.590	1280	7500	.281
1410D	.188	.312	.156	.359	.590	1280	7500	.281
1413A	.113	.250	.075	.266	.500	1280	6800	.219
1413B	.113	.250	.105	.266	.500	1280	6800	.219
1413C	.113	.250	.135	.266	.500	1280	6800	.219
1413D	.113	.250	.165	.266	.500	1280	6800	.219
1424B	.113	.156	.105	.375	.530	2030	6800	.150
1424C	.113	.156	.135	.375	.530	2030	6800	.150
1424D	.113	.156	.165	.375	.530	2030	6800	.150
1429B	.113	.156	.105	.219	.380	2030	4500	.150
1429C	.113	.156	.135	.219	.380	2030	4500	.150
1429D	.113	.156	.165	.219	.380	2030	4500	.150

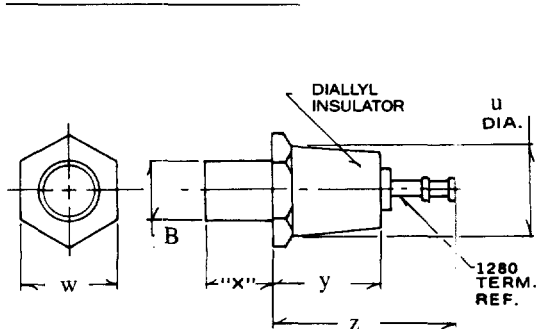


Fig. 1410

Order Swage Tooling: Add prefix TLU with the part number

Example: TLU1410

Double Turret

Refer to Figure 1425

External Threads

Part No.	"T" Thread	W	X	Y	Z	Terminal	DWV
1425A	2-56	.156	.125	.375	.530	2030	6000
1425B	2-56	.156	.218	.375	.530	2030	6000
1426A	2-56	.156	.125	.219	.380	2030	6000
1426B	2-56	.156	.218	.219	.380	2030	6000

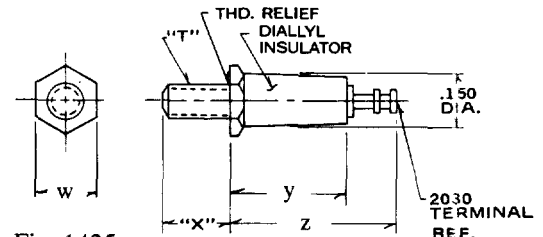


Fig. 1425

Double Turret

Refer to Figure 1411

Internal Threads

Part No.	"T" Thread	W	Y	Z	Terminal	DWV	U DIA
1411A	6-32 x 3 full	.250	.266	.500	1280	6800	.218
1411B	4-40 x 3 full	.250	.266	.500	1280	6800	.218
1417	6-32 x 3 full	.312	.359	.590	1280	7000	.281
1417A	4-40 x 3 full	.312	.359	.590	1280	7000	.281
1422	6-32 x 3 full	.312	.844	1.080	1280	8400	.281
1422A	4-40 x 3 full	.312	.844	1.080	1280	8400	.281
1423	6-32 x 3 full	.312	.525	.890	1300	8000	.281
1423A	4-40 x 3 full	.312	.525	.890	1300	8000	.281
1427	2-56 x .05 deep	.156	.375	.530	2030	7000	.150
1428	2-56 x .05 deep	.156	.219	.380	2030	3900	.150

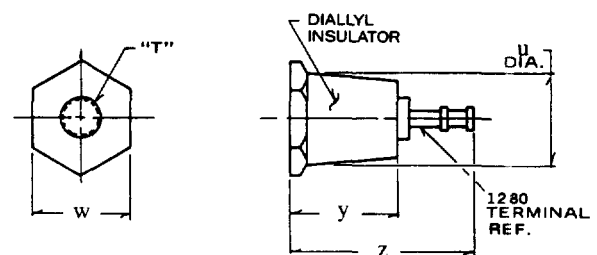


Fig. 1411

Standard Plating Suffix to Part Number

See Page 93 for all plating options.

Terminal		Base
-7 (Au over Cu)	or	-12 (Ni over Cu)
-4 (Sb over Cu)		-12 (Ni over Cu)
		-5 (Sn over Cu) <small>1424 only</small>

TOLERANCE: .xxx ±.010, .xx ±.016 (ALL DIMS. BEFORE PLATING)

Winchester Electronics

400 Park Road • Watertown, Ct 06795-0500 • Phone:(860)945-5000 • FAX: (860)945-5191 • E-MAIL: useco@litton-wed.com



Insulated Terminals Molded Diallyl

Double Turret Refer to Figure 764

External Threads

Part No.	Thread	W	X	Y	Z	Term Dia	DWV
764	4-40	.250	.218	.593	.940	.140	8400
764A	6-32	.250	.188	.593	.940	.140	8400
764B	6-32	.250	.250	.593	.940	.140	8400
764C	6-32	.250	.312	.593	.940	.140	8400
764D	6-32	.250	.375	.593	.940	.140	8400
764E	4-40	.250	.188	.593	.940	.140	8400
764F	4-40	.250	.250	.593	.940	.140	8400
765	4-40	.250	.218	.375	.720	.140	6000
765A	6-32	.250	.188	.375	.720	.140	6000
765B	6-32	.250	.250	.375	.720	.140	6000
765C	6-32	.250	.312	.375	.720	.140	6000
765D	6-32	.250	.375	.375	.720	.140	6000
765E	4-40	.250	.188	.375	.720	.140	6000
765F	4-40	.250	.250	.375	.720	.140	6000
765G	6-32	.250	.218	.375	.720	.140	6000

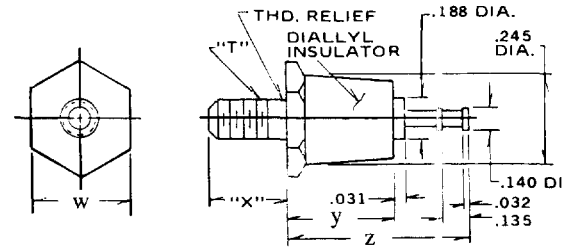


Fig. 764

Double Turret Refer to Figure 784

External Threads

Part No.	Thread	W	X	Y	Z	Term Dia	DWV
784	6-32	.250	.218	.593	.840	.093	8400
784A	6-32	.250	.188	.593	.840	.093	8400
784B	6-32	.250	.250	.593	.840	.093	8400
784C	6-32	.250	.312	.593	.840	.093	8400
784D	6-32	.250	.375	.593	.840	.093	8400
784E	4-40	.250	.188	.593	.840	.093	8400
784F	4-40	.250	.250	.593	.840	.093	8400
785	6-32	.250	.218	.375	.620	.093	6000
785A	6-32	.250	.188	.375	.620	.093	6000
785B	6-32	.250	.250	.375	.620	.093	6000
785C	6-32	.250	.312	.375	.620	.093	6000
785D	6-32	.250	.375	.375	.620	.093	6000
785E	4-40	.250	.188	.375	.620	.093	6000
785F	4-40	.250	.250	.375	.620	.093	6000

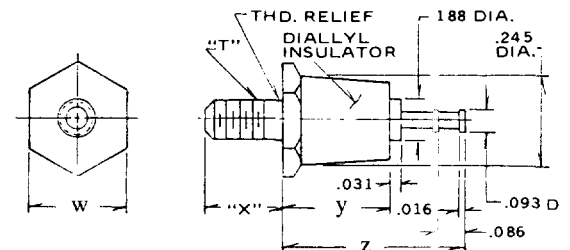


Fig. 784

Standard Plating Suffix to Part Number

See Page 93 for all plating options.

Terminal

-55 (Sn over Cu)
Reflowed

or

Base

-12 (Ni over Cu)

TOLERANCE: .xxx ±.010, .xx ±.016 (ALL DIMS. BEFORE PLATING)



Insulated Terminals Molded Diallyl



Double Turret

Refer to Figure 1409

External Threads

Part No.	Thread	W	X	Y	Z	Terminal	DWV
1409A	6-32	.250	.188	.266	.500	1280	6000
1409B	6-32	.250	.250	.266	.500	1280	6000
1409C	6-32	.250	.312	.266	.500	1280	6000
1409D	6-32	.250	.375	.266	.500	1280	6000
1409E	4-40	.250	.188	.266	.500	1280	6000
1409F	4-40	.250	.250	.266	.500	1280	6000
1409G	4-40	.250	.312	.266	.500	1280	6000
1409H	4-40	.250	.375	.266	.500	1280	6000
1418A	6-32	.312	.188	.359	.590	1280	7500
1418B	6-32	.312	.250	.359	.590	1280	7500
1418C	6-32	.312	.312	.359	.590	1280	7500
1418D	6-32	.312	.375	.359	.590	1280	7500
1418E	4-40	.312	.188	.359	.590	1280	7500
1418F	4-40	.312	.250	.359	.590	1280	7500
1418G	4-40	.312	.312	.359	.590	1280	7500
1418H	4-40	.312	.375	.359	.590	1280	7500
1421A	6-32	.312	.188	.844	1.080	1280	8400
1421B	6-32	.312	.250	.844	1.080	1280	8400
1421C	6-32	.312	.312	.844	1.080	1280	8400
1421D	6-32	.312	.375	.844	1.080	1280	8400
1421E	4-40	.312	.188	.844	1.080	1280	8400
1421H	4-40	.312	.375	.844	1.080	1280	8400

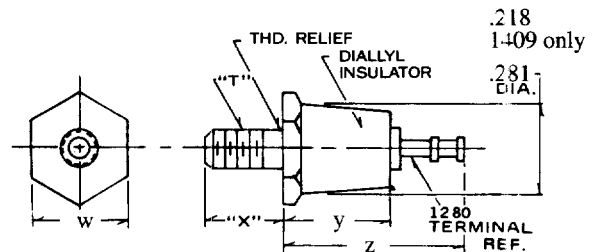


Fig. 1409

Standard Plating Suffix to Part Number

See Page 93 for all plating options.

Terminal		Base
-7 (Au over Cu)	or	-12 (Ni over Cu)
-4 (Sb over Cu)		-12 (Ni over Cu)

TOLERANCE: .xxx ±.010, .xx ±.016 (ALL DIMS. BEFORE PLATING)